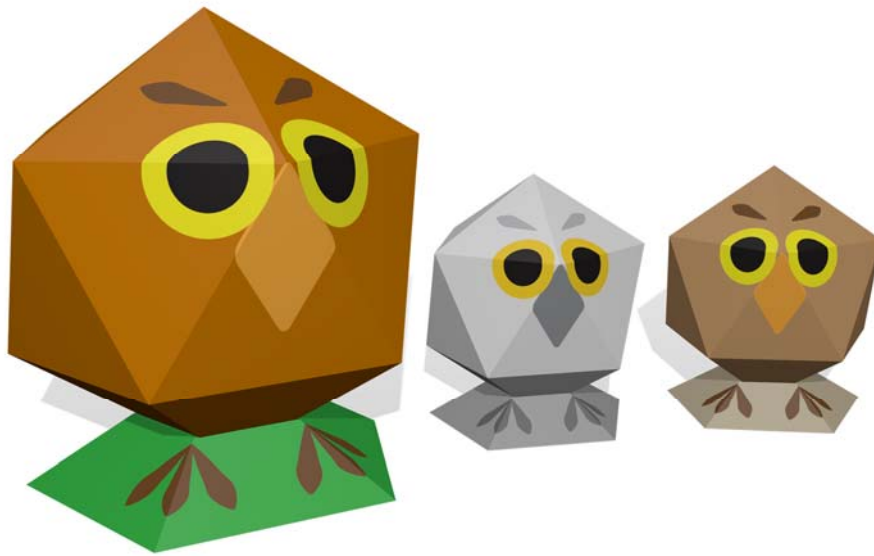


---

# THE “WISE WATCHER” FAMILY

---



---

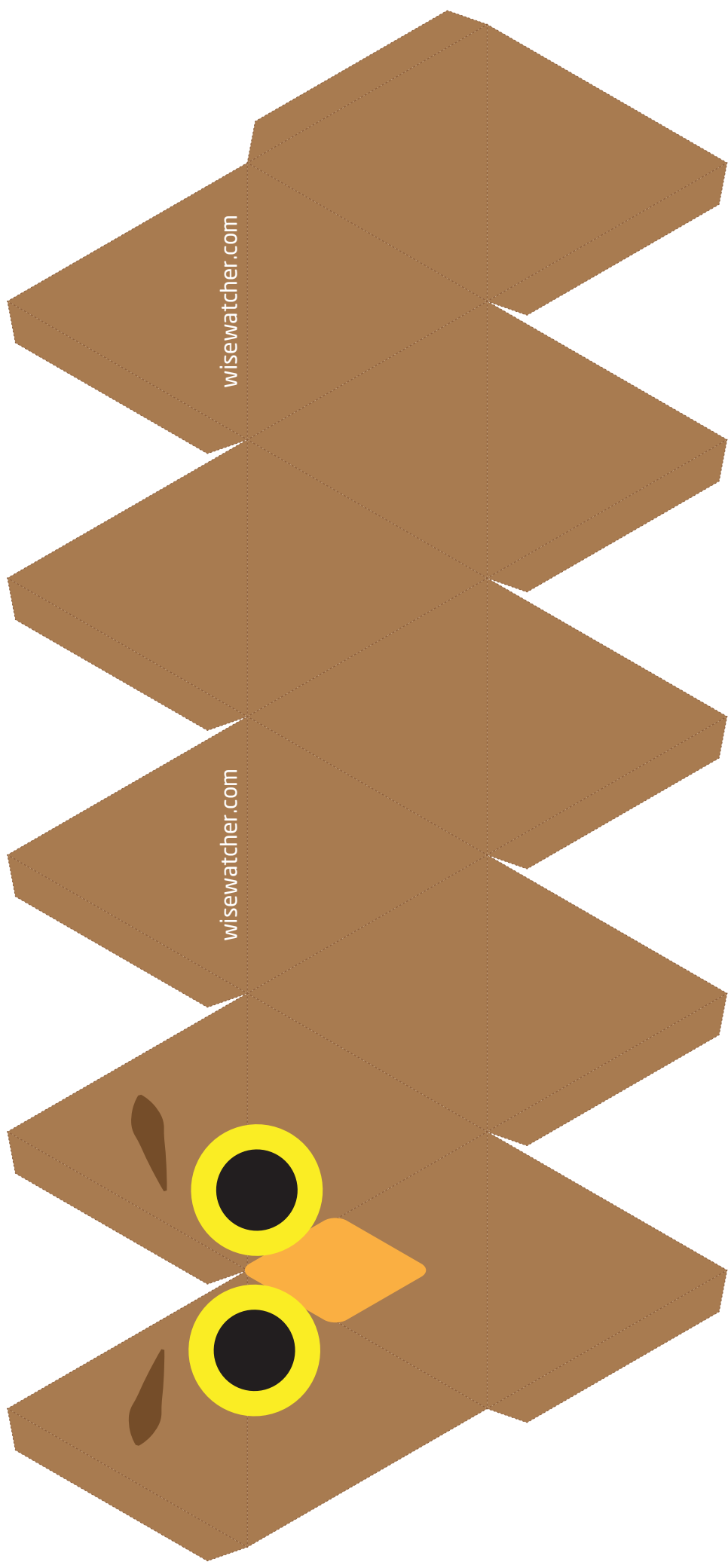
FIND US AT [WWW.WISEWATCHER.COM](http://WWW.WISEWATCHER.COM)

---

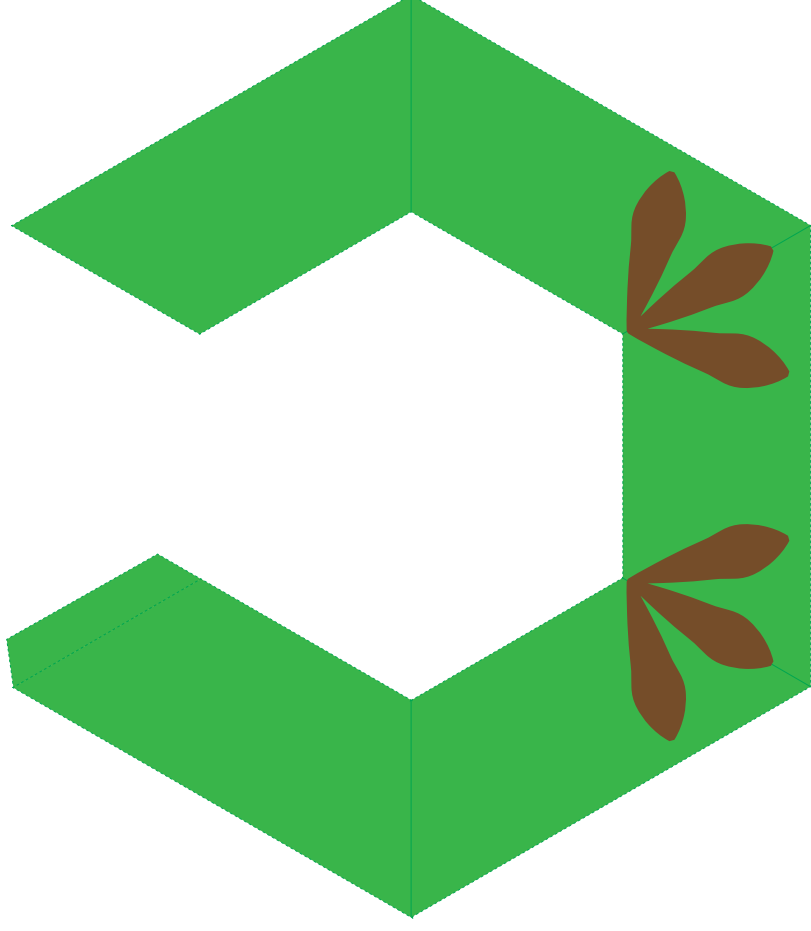
## INSTRUCTIONS ON BUILDING THE “WISE WATCHERS”:

1. Print the pages below.
2. Cut out each of the pieces from your printed pages.
3. Score the lines on each piece (coloured side up) with a blade to ease folding.
4. Fold the lines slightly, and the tabs towards the back of the paper.
5. Glue the tabs to their adjacent corners.
6. Place the wise watchers on their bases, welcome to the family!

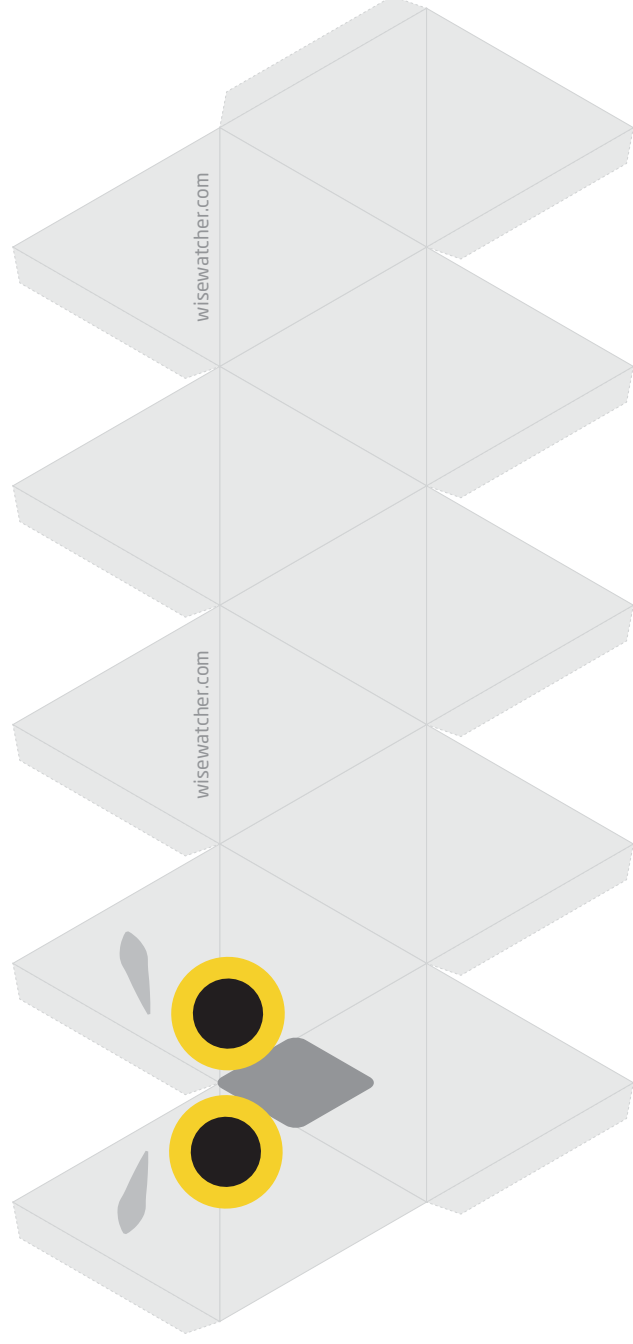
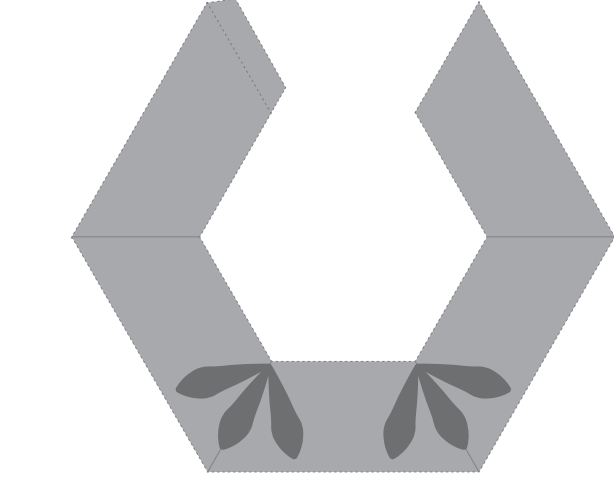
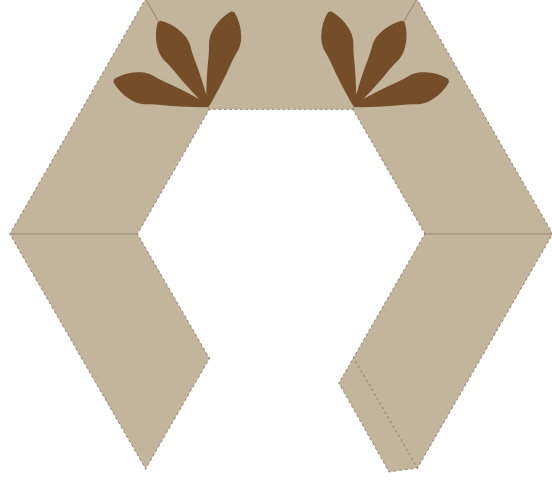
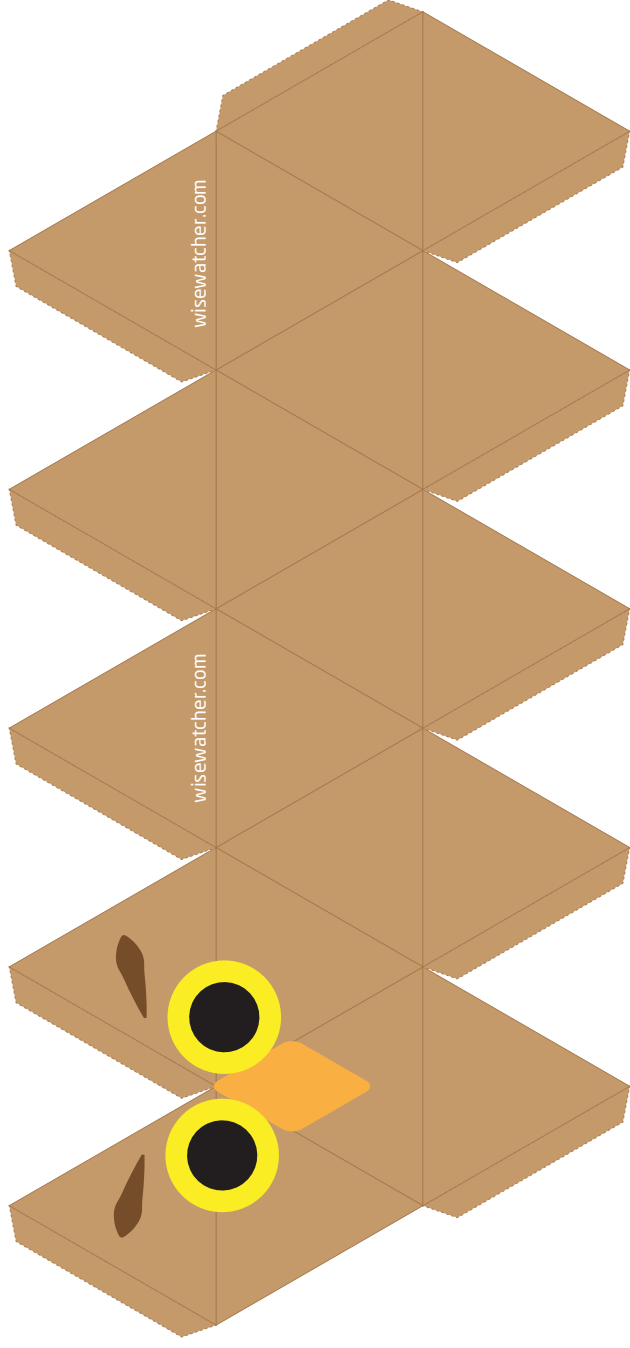
# The 'Wise Watcher'



# The 'Wise Watcher'



# The little 'wise watcher'



# The 'Wise Watcher' - free-standing (no base needed)

